

LIBS tool to diagnose the Egyptian deteriorated wall paintings during laser cleaning process, an experimental study.

Dr.Atef A.Brania
Dr.Khaled Elsayed

♦, Dr.H. Imam♦♦,
♦♦♦,Dr.Remah Elrashdy♦♦♦♦

Abstract:

The wall painting surfaces represent the main challenge for the laser cleaning techniques. The objective of this work has been the study of the laser cleaning technique when applied to wall paintings. In particular, this study has been devoted to understanding how the characteristics of the laser apparatus and its specific use are linked with the nature of the substances to be removed from the painting. A number of artificially wall paintings were selected with paint layers that were composed of different pigments and covered with different dirties. In this work the feasibility of laser cleaning for the removal of dirties from the wall painting surfaces using Q-switch Nd:YAG laser operating at two different wavelengths: in the infra-red and in the visible (1064 and 532 nm) is presented. The effectiveness of the cleaning process was monitored by following the disappearance from the LIBS spectra of the deterioration aspects elements during successive laser shots. The aim of this work is focus on the definition of the experimental boundary conditions in which laser cleaning can be safely applied in cleaning of the deteriorated wall paintings.

Key words: *wall painting, LIBS, cleaning.*

1. Introduction:

Commonly used methods of surface cleaning in conservation of art works are based on mechanical or chemical techniques which are individually selected by experienced conservators. These traditional methods are very difficult to control. Cleaning of

♦ Faculty of Archaeology, Conservation Dept., Cairo University.

♦♦ National Institute of laser Enhanced Sciences, Cairo University.

♦♦♦ Faculty of Sciences, Physics Dept., Cairo University.

♦♦♦♦ National Institute of laser Enhanced Sciences, Cairo University.

delicate objects, diverse from the point of view of materials composition needs not only extended expert appraisements of used substances, but also minimization of possible damages, always present in the case of mechanical cleaning. Chemical reagents show similar interactions in the conservation of paintings, where chemicals penetrate technological painting layers and causes permanent, difficult to analyze, cross-sectional alterations.

Conservation practice shows the necessity of frequent treatments of sophisticated objects with complex technological structures and individual preservation states, resulting from the influence of diverse external factors, as well as changes in original material on construction itself. Application of conventional conservation methods is limited and difficult. Moreover, every detail requires individual, predetermined cleaning parameters. Application of laser technique gives possibility of almost full control of the encrustation removal process at the surface of art works. Selective and precise interaction of the light beam is a fundamental advantage of non-invasive treatment of more or less tightly connected unwanted surface layers. Specific properties of lasers, decrease of system costs, and reduction of dimensions of laser cleaning systems have contributed to increasing applications of lasers in conservation, particularly during recent the ten to fifteen years^{1, 2, 3}. Laser cleaning must be considered as an advanced tool applied in cases where traditional techniques may be inadequate.

Nevertheless, extreme care should be taken for the optimization of the operational parameters in order to ensure the absence of any negative effects induced on the artwork. It should be pointed out in

¹- Georgiou S., Fotakis C., Anglos D., Zafirooulos V., and Tornari V.: Lasers in the Preservation of Cultural Heritage: Principles and Applications Inst. of Physics Pub. Inc., Williston, Vermont, (2006).

²- Calcagno G., Pummer E., and Koller M.: "St. Stephen's Church in Vienna: Criteria for Nd:YAG laser cleaning on an architectural scale," J. Cultural Heritage 1, Supp. 1, (2000) , S111-117.

³-Weeks C.: "The Portail de la Mère Dieu of Amiens Cathedral: its polychromy and conservation," Studies in Conservation. 43, (1998) ,101-108.

this place that laser cleaning of historical objects is still far from being as popular as the conventional techniques, being employed in an increasing, but relatively small number of restoration interventions, mainly applied to stone substrates. Even if the last generation of laser systems has improved the understanding of their effects and their engineering, laser cleaning is not yet a mature technology for earlier restoration tests, there is also lack of in-depth knowledge of the basic laser-artwork interaction mechanisms^{4 5 6 7}. There is still also a lack of diagnostic devices providing qualitative and quantitative information during the laser cleaning intervention. Application of laser radiation in physico-chemical surface analyses and structural objects investigations, have started simultaneously with development of laser cleaning systems. In the face of increasing interest in laser cleaning and diagnostic systems, important is acquaintance of the conservation community with the fundamental advantages and shortcomings of laser radiation in treatment and analysis of matter. Material investigations have shown that main conservation cleaning problem with stone sculptures exposed to atmospheric pollution is the preservation of delicate patinas. This historical superficial layer can be lost, as a result, to the use of non-laser, aggressive, not fully controlled cleaning methods.

Laser cleaning as a method of restoring works of art has undergone successful testing in the course of the last two decades and has become widely used in solving many problems that have great

⁴ - Ibid, 101-108.

⁵ -Pini R. Siano S., Salimbeni R., Piazza V., Giamello M., G. Sabatini G., and Bevilacqua F., "Application of a new laser cleaning procedure to the mausoleum of Theodoric," J. Cultural Heritage 1, (2000) , S93-97.

⁶-Bromblet P., Labouri M., and Orial G., "Diversity of the cleaning procedures including laser for the restoration of carved portals in France over the last 10 years," J. Cultural Heritage 4, (2003) ,17- 26.

⁷ - Siano S., Casciani A, Giusti A., M. Matteini M., Pini R., Porcinai S., and Salimbeni R., "The Santi Quattro Coronati by Nanni di Banco: cleaning of the gilded decorations," J. Cultural Heritage 4, Supp. 1, (2003) ,123 –128.

practical significance. The most substantial results in this case were achieved in the restoration of stone monuments. It was demonstrated that laser processing has high efficiency and a number of other advantages in this area by comparison with traditional technologies⁸. The examples described in the literature of the successful use of lasers in carrying out restoration work on certain well-known monuments, including sculptures and the façades of historical buildings,^{9, 10, 11, 12, 13, 14} make it possible to speak today of the wide use of laser methods in the restoration of stone in many countries of the world.

Although a number of successful applications have been reported, laser cleaning has its own disadvantages in practice¹⁵. For example overexposure to the laser pulse may easily result in substrate damage due to the high energy density of the laser beam. This may lead to fatal faults in art conservation and a loss of yield in the surface cleaning and loss of the artwork integrity. Meanwhile underexposure can have residual contaminations on the surface. The whole surface has to be cleaned by scanning the laser beam if a

⁸ - Georgiou S., Fotakis C., Anglos D., Zafropoulos V., and Tornari V.,: Lasers in the Preservation of Cultural Heritage: Op.cit.

⁹ - Calcagno G., Pummer E., and Koller M.,: "St. Stephen's Church in Vienna: criteria for Nd:YAG laser cleaning on an architectural scale," J. Cultural Heritage 1, Supp. 1, (2000) , S111-117.

¹⁰-Weeks C.,:"The Portail de la Mère Dieu of Amiens Cathedral: its polychromy and conservation," Studies in Conservation. 43, (1998) ,101-108.

¹¹- Pini R. Siano S., Salimbeni R., Piazza V.,: Giamello M., G. Sabatini G., and Bevilacqua F., "Application of a new laser cleaning procedure to the mausoleum of Theodoric," J. Cultural Heritage 1, (2000) , S93-97.

¹² -Bromblet P., Labouri M., and Oriol G., : "Diversity of the cleaning procedures including laser for the restoration of carved portals in France over the last 10 years," J. Cultural Heritage 4, (2003) ,17- 26.

¹³ - Siano S., Casciani A, Giusti A., M. Matteini M., Pini R., Porcinai S., and Salimbeni R., : "The Santi Quattro Coronati by Nanni di Banco: cleaning of the gilded decorations," J. Cultural Heritage 4, Supp. 1, (2003) ,123 –128.

¹⁴ -Siano S. and Salimbeni R., : "The Gate of Paradise: physical optimization of the laser cleaning approach," Studies in Conservation,(2001), 46, 269.

¹⁵ - Lee J. M. and Watkins K. G.,: In process and intelligent monitoring systems for laser cleaning process. Optics and Lasers in Engineering Volume 34, Issues 4-6, October 2000, Pages 429-442 Ph.D. Thesis, University of Liverpool, UK., (1999).

substrate much larger than the laser spot is to be treated. Since the contaminations are not uniformly distributed on the substrate surface and if the surface is uneven or irregular, some areas of the substrate may suffer damage while others still have residual contamination if the laser irradiation conditions are applied over the whole surface during the laser scanning. Therefore in-process monitoring is required to control the laser cleaning process.

Since laser cleaning of a wide variety of artworks has been strongly developing in the last decade, LIBS has become an effective method for on-line monitoring of the cleaning process itself. During contaminants removal from the object surface, the emitted spectra change due to change of elemental composition of the ablated layer. This change can be used to understand the causes of contamination and also to avoid undesired over-cleaning of the object itself. Laser cleaning, with the aid of on-line LIBS monitoring, has been employed to remove extraneous coatings of various kinds, including dark encrustations from marble, terracotta, stone and glass artworks due to exposure to air pollutants^{16 17 18 19}, protective and conservative coatings from canvas paintings and synthetic mimicking materials^{20 21 22 23 24 25}, corroded layers from metal

¹⁶ - Klein, S.; Hildenhagen, J.; Dickmann, K.; Stratoudaki, T.; Zafirooulos, V.; LIBS-Spectroscopy for Monitoring and Control of the Laser Cleaning Process of Stone and Medieval Glass. *J. Cult. Herit.*, 1, (2000), 287-292.

¹⁷ - Oujja, M.; Rebollar, E.; Castillejo, M.; Domingo, C.; Cirujano, C.; Guerra Librero, F.; Laser Cleaning of Terracotta Decorations of the Portal of Palos of the Cathedral of Seville. *J. Cult. Herit.*, 6, n 4, (2005), 321-327.

¹⁸ - Lazic, V.; Fantoni, R.; Colao, F.; Santagata, A.; Morone, A.; Spizzichino, V.; Quantitative Laser Induced Breakdown Spectroscopy Analysis of Ancient Marbles and Corrections for the Variability of Plasma Parameters and of Ablation Rate. *J. Anal. At. Spectrom.*, 19, (2004), 429-436.

¹⁹ - Scholten, J.H.; Teule, J.M.; Zafirooulos, V.; Heeren, R.M.A.; Controlled Laser Cleaning of Painted Artworks using Accurate Beam Manipulation and On-line LIBS-Detection. *J. Cult. Herit.*, 1, (2000), 215-220.

²⁰ - Bracco, P.; Lanterna, G.; Matteini, M.; Nakahara, K.; Sartiani, O.; de Cruz, A.; Wolbarsht, M.L.; Adamkiewicz, E.; Colombini, M.P.; Er:YAG Laser: An Innovative Tool for Controlled Cleaning of Old Paintings: Testing and Evaluation. *J. Cult. Herit.*, 4, (2003), 202-208.

²¹ - Batishche, S.; Englezis, A.; Gorovets, T.; Kouzmouk, A.; Pilipenka, U.; Pouli, P.; Tatur, H.; Totou, G.; Ukhau, V.; Nd:YAG Laser Double Wavelength Ablation of Pollution Encrustation=

objects^{26, 27}, dirt (dust and pen and pencil traces) from historical paper documents^{28, 29}, pencil and pen marks on alabaster and marble statues in a stand-off configuration³⁰ and patinas on surfaces of historical buildings³¹.

The most appealing features of LIBS applications in the field of cultural heritage analysis are mainly the following: its micro-destructiveness, with ablated sample portions on the order of fractions of micrograms and induced damage virtually invisible to

= on Marble and Bonding Glues on Duplicated Painting Canvas. *Appl. Surf. Sci.*, 248, (2005), 264-269.

²² - Pouli, P.; Nevin, A.; Andreotti, A.; Colombini, P.; Georgiou, S.; Fotakis, C.: Laser Assisted Removal of Synthetic Painting-Conservation Materials using UV Radiation of ns and fs Pulse Duration: Morphological Studies on Model Samples. *Appl. Surf. Sci.*, 255, (2009), 4955-4960.

²³ - Teule, R.; Scholten, H.; van den Brink, O.F.; Heeren, R.M.A.; Zafirooulos, V.; Hesterman, R.; Castillejo, M.; Martin, M.; Ullenius, U.; Larsson, I.; Guerra-Librero, F.; Silva, A.; Gouveia, H.; Albuquerque, M.-B.: Controlled UV Laser Cleaning of Painted Artworks: A Systematic Effect Study on Egg Tempera Paint Samples. *J. Cult. Herit.*, 4, (2003), 209-215.

²⁴ - Lopez, A.J.; Nicolas, G.; Mateo, M.P.; Pinon, V.; Tobar, M.J.; Ramil, A.; Compositional Analysis of Hispanic Terra Sigillata by Laser-induced Breakdown Spectroscopy. *Spectrochim. Acta B*, 60, (2005), 1149-1154.

²⁵ - Lopez, A.J.; Nicolas, G.; Mateo, M.P.; Ramil, A.; Pinon, V.; Yanez, A.: LIPS and Linear Correlation Analysis Applied to the Classification of Roman Pottery Terra Sigillata. *Appl. Phys. A*, 83, (2006), 695-698.

²⁶ -, Colao, F.; Fantoni, R.; Lazic, V.; Spizzichino, V.: Laser-induced Breakdown Spectroscopy for semi-Quantitative and Quantitative Analyses of Artworks—Application on multi-Layered Ceramics and Copper based Alloys. *Spectrochim. Acta B*, 57, (2002), 1219-1234.

²⁷ - Fortes, F.J.; Cabalín, L.M.; Laserna, J.J.: The Potential of Laser-induced Breakdown Spectrometry for Real Time Monitoring the Laser Cleaning of Archaeometallurgical Objects. *Spectrochim. Acta B*, 63, (2008), 1191-1197.

²⁸ - Ochocińska, K.; Kamińska, A.; Sliwinski, G.: Experimental Investigations of Stained Paper Documents Cleaned by the Nd:YAG Laser Pulses. *J. Cult. Herit.* (2003), 4, 188-193.

²⁹ - Kaminska, A.; Sawczak, M.; Komar, K.; Sliwinski, G.: Application of the Laser Ablation for Conservation of Historical Paper Documents. *Appl. Surf. Sci.* (2007), 253, 7860-7864.

³⁰ - Gronlund, R.; Lunqvist, M.; Svanberg, S.: Remote Imaging Laser-induced Breakdown Spectroscopy and Remote Cultural Heritage Ablative Cleaning. *Opt. Lett.*, 30, (2005), 2882-2884.

³¹ - Vazquez-Calvo, C.; Giakoumaki, A.; Anglos, D.; Alvarez de Buergo, M.; Fort, R.: Classification of Patinas Found on Surfaces of Historical Buildings by Means of Laser-induced Breakdown Spectroscopy. In *Lasers in the Conservation of Artworks*; Springer: Berlin, Germany; Volume 116, (2007), 415-420.

the naked eye; its potential for fast multi-elemental analysis and capability of simultaneous detection of major and trace elements; its equipment, easily compactable into portable instruments for *in situ* analyses of piece of arts that cannot be removed from museums or excavation sites, or of historical buildings and wall paintings.

Besides being a powerful technique to control the removal of layers due to aging and pollution of artworks, LIBS is among the few techniques able to provide multi-elemental depth-profiling of intrinsically multi-layered samples, such as ceramics, paintings and frescoes, resulting at the same time only micro-destructive. This potential has been exploited, often coupled with Raman spectroscopy that provides complementary molecular information for dating and provenance studies^{32,33} and for pigment identification in a number of different painted artworks, including ceramics^{34,35}, icons and miniatures^{36,37}, painted plasters³⁸, polychromes on wood

³² - Osticioli, I.; Mendes, N.F.C.; Porcinai, S.; Cagnini, A.; Castellucci, E.: Spectroscopic Analysis of Works of Art using A Single LIBS and Pulsed Raman Setup. Anal. Bioanal. Chem., 394, (2009) , 1033-1041.

³³ -Burgio, L.; Melessanaki, K.; Doulgeridis, M.; Clark, R.J.H.; Anglos, D.: Pigment Identification in Paintings Employing Laser Induced Breakdown Spectroscopy and Raman Microscopy. Spectrochim. Acta B 2001, 56, (2010), 905-913.

³⁴ - Clark, R.J.H.: Pigment Identification by Spectroscopic Means: An Arts/Science Interface. C. R. Chim.2002, 5, (2002), 7-20.

³⁵ -Osticioli, I.; Mendes, N.F.C.; Porcinai, S.; Cagnini, A.; Castellucci, E.: Spectroscopic Analysis of Works of Art using A Single LIBS and Pulsed Raman Setup. Op cit , 1033-1041.

³⁶ - Burgio, L.; Melessanaki, K.; Doulgeridis, M.; Clark, R.J.H.; Anglos, D., : Pigment Identification in Paintings Employing Laser Induced Breakdown Spectroscopy and Raman Microscopy Op cit, 905-913.

³⁷ - Clark, R.J.H.: Pigment Identification by Spectroscopic Means: An Arts/Science Interface. Op cit, 7-20.

³⁸ -Brysbaert, A.; Melessanaki, K.; Anglos, D.: Pigment Analysis in Bronze Age Aegean and Eastern Mediterranean Painted Plaster by Laser-induced Breakdown Spectroscopy (LIBS). J. Archaeol. Sci. 2006, 33, (2006), 1095-1104.

³⁹, artistic prints, wall paintings of historical buildings and historical parchment^{40, 41, 42}.

The objective of this work has been the study of the laser cleaning technique when applied to wall paintings. In particular, this study has been devoted to understanding how the characteristics of the laser apparatus and its specific use are linked with the nature of the substances to be removed from the painting. A number of artificial wall paintings “models” were selected with paint layers that were composed of different pigments applied with the most common media in Egyptian wall painting. The laser used was a Nd:YAG laser operating in Q-switch. The laser could emit at two different wavelengths: in the infra-red and in the visible (1064 and 532 nm). The main objective of the work was to determine the optimum working conditions for the substances to be removed, through the establishment of laser parameters such as the wavelength, the repetition rate and the energy density. LIBS technique was used as an effective method for on-line monitoring of the cleaning process during the deterioration aspects “encrustation” removal from the object surface, by monitoring the emitted spectra change due to change of elemental composition of the ablated layer.

³⁹ -Castillejo, M.; Martin, M.; Silva, D.; Stratoudaki, T.; Anglos, D.; Burgio, L.; Clark, R.J.H. Analysis of Pigments in Polychromes by Use of Laser Induced Breakdown Spectroscopy and Raman Microscopy. *J. Mol. Struct.*, 550, (2000) , 191-198.

⁴⁰ -Oujja, M.; Vila, A.; Rebollar, E.; Garcia, J.F.; Castillejo, M., Identification of Inks and Structural Characterization of Contemporary Artistic Prints by Laser-induced Breakdown Spectroscopy, *Spectrochim. Acta B*, 60, (2005), 1140-1148.

⁴¹ - Bruder, R.; L’Hermite, D.; Semerok, A.; Salmon, L.; Detalle, V., Near-Crater Discoloration of White Lead in Wall Paintings During Laser Induced Breakdown Spectroscopy Analysis, *Spectrochim. Acta B*, 62, (2007), 1590-1596.

⁴² - Dolgin, B.; Chen, Y.; Bulatov, V.; Schechter, I., Use of LIBS for Rapid Characterization of Parchment. *Anal. Bioanal. Chem.*, 386, (2006), 1535-1541.

2. Experimental Section:

2.1. Wall painting models description:

Models of the most common wall painting “components and stratigraphy” in Egypt were prepared at the laboratory. On one hand, limestone and gypsum were used as a support and plaster coat consequently followed by application the most common pigments in tempera technique. On the other hand three kind of the most common pigment (red or brown “Hematite $\alpha\text{-Fe}_2\text{O}_3$ “, yellow “goethite $\alpha\text{-FeOOH}$ ”⁴³ and black “carbon black C”)⁴⁴, in the Egyptian wall painting were used, after well preparation. Glue, Arabic Gum and Albumin were used as the common binder of the Egyptian pigments, in the wall painting. Only one binder was selected for application with every pigment in the model. After the models preparation, an artificial and concentrated layer of the most common deterioration aspects “dirties” mud mixed with gypsum; soot, wax, and gypsum were added on the experimental models surfaces, fig. (1).



Fig. (1): the wall painting models after adding the deterioration aspects: a) mixed mud with gypsum, b) gypsum, c) wax and d) soot.

⁴³ - Uda M., Sassa S., Yoshimura S., Kondo J., Nakamura M., Ban Y., Adachi H.,: Yellow, red and blue pigments from ancient Egyptian palace painted walls, *Nuclear Instruments and Methods in Physics Research B* 161-163, (2000) , 758 -761.

⁴⁴ - Alessandra P., Lorenzo A. and Piero M.,: Non-destructive in situ determination of pigments in 15th century wall paintings by Raman microscopy, *Analytica Chimica Acta* Volume 480, Issue 2, 24 March, (2003), 317-325 .

2.2. Artificial ageing (Heating-drying cycles)

On one hand, it is usually considered that artificial ageing has a great advantage because of rapidly obtained results in comparison with natural weathering. It is important to define the laboratory parameters of the cyclic artificial ageing⁴⁵ of the painting materials in order to find out the relation between artificial climatic ageing and natural weathering thus affording the opportunity to predict the real durability of the painting under natural ageing conditions. On the other hand, temperature fluctuation causes the deformations in the painted rendering's external layer. The air temperature fluctuation in Upper Egypt is considering the most common factor of deterioration of the wall painting. Depending on that, artificial heating cycles elected as the main parameter. The experimental models with its artificial dirties have been prolonged to artificial ageing cycles in a climatic chamber. In the climatic chamber the following temperature regimes have been applied 15 cycle in 65 °C (16 hour in the climatic chamber) – followed by 8 hours in the normal condition 15 cycle in 120 °C with the same procedure. Petrie dish full of water was in the climatic chamber for the humidity, imitating the natural weather as possible as we can. The deterioration aspects became whiter than before was the only notice after the artificial ageing cycles, fig. (2).



Fig.(2): The wall painting models after the artificial ageing cycles: a) mixed mud with gypsum, b) gypsum, c) wax and d) soot.

⁴⁵- Norvaisiene R. , Burlingis A. and Stankevicius V., : Durability tests on painted facade rendering by accelerated ageing ,materials science (Medziagotyra).Vol. 16, No.1.(2010),80-85.

2.3. Methodology:

2.3.1. Mechanical cleaning:

The first step for removing the concentrated layer of dirties was the mechanical cleaning. One hand different kinds of soft brushes, scalpels...etc, were used, with locally wetting by distilled water and ethanol 1:1, fig. (3). On the other hand removing the surfaces incrustation was not so difficult except gypsum and wax. The mechanical cleaning was stopped after removing the majority of incrustation to start laser cleaning experiments, as a chemical cleaning alternative.



Fig. (3): The wall painting models during the mechanical cleaning (No laser applied yet).

2.3.2. Laser Cleaning

Laser cleaning were performed with different irradiances according to the kind of encrustation layer of model. Various conditions of energy per pulse, no of shots and the distance between the lens and model were chosen to irradiate rectangle zone with different irradiance according to the encrustation layer.

The cleaning of the model was done by focusing of the laser beam of the Nd:YAG laser at 1064-nm via a quartz cylindrical lens of 9-cm focal length on the model. The model was positioned on the x-y-z micro-translation stage. The emission from the plasma created during the removal of the encrustation layer was collected with fiber coupled to an Echelle spectrometer and ICCD camera system. The experimental setup is shown in Fig. (4).

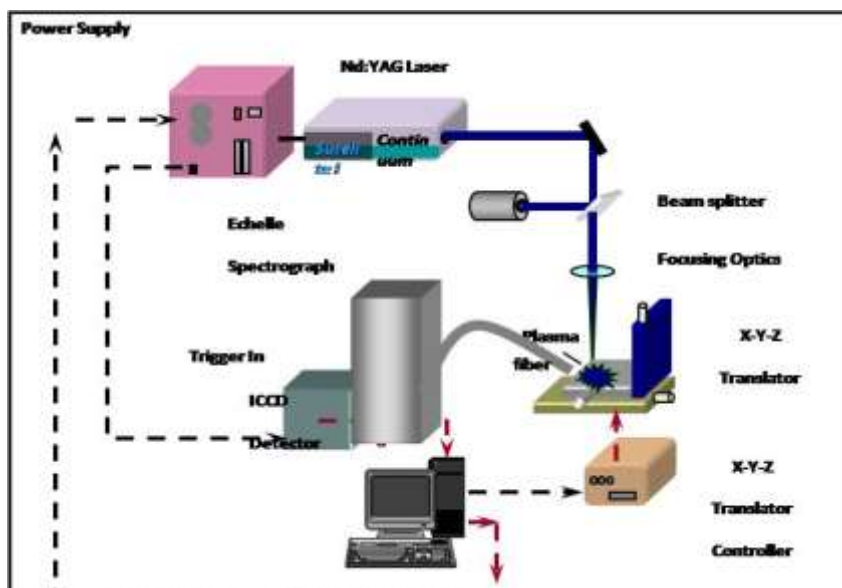


Fig. (4): LIBS experimental setup.

There were three experimental wall paintings models with different specific layers of deterioration aspects. The distance between the model and the lens was set to 7.5-cm and the dimension of focused beam was 2×7 -mm² long. The whole parts of the model were cleaned at irradiance of 0.2 J cm^{-2} . The number of pulses was varying from one section to another according to thickness of layer need to be removed. The high numbers of pulses were used to remove thick crust layer while low number of pulses were used to remove the thin layer (2 Hz). High irradiance of 1.2 J.cm^{-2} was needed to remove layers of Gypsum (10 Hz), fig. (5,6). The laser cleaning was very effective in cleaning the models but discoloration of the section of the yellow pigment “goethite FeOOH , , , ”^{46, 47, 48} was noticed during the laser cleaning because of thermal effect of

⁴⁶- Uda M., Sassa S., Yoshimura S., Kondo J., Nakamura M., Ban Y., Adachi H.,: Yellow, red and blue pigments from ancient Egyptian palace painted walls, *Nuclear Instruments and Methods in Physics Research B* 161-163, (2000) , 758 -761.

⁴⁷ - Danilo B., Gianni A., Pier P.L. and Antonella C.,: Raman microspectrometric investigation of wall paintings in: a comparison between two artists of the 16th century , *Spectrochimica Acta Part A: Molecular and Biomolecular Spectroscopy* Volume 59, Issue 10, (2003) , 2409-2417.

⁴⁸ - Uda M.,: In situ characterization of ancient plaster and pigments on tomb walls in Egypt using energy dispersive X-ray diffraction and fluorescence , *Nuclear Instruments and Methods* =

the 1064nm laser beam. Though different laser wavelength of 532nm was examined to avoid this discoloration but the same results were obtained. On the other hand no big difference was noticed for the three media used during laser cleaning, fig. (7) .



Fig. (5): The wall painting models during laser cleaning,(notice the difficulty of gypsum incrustation removing).



Fig. (6): The wall painting models during laser cleaning compared with mechanical cleaning.

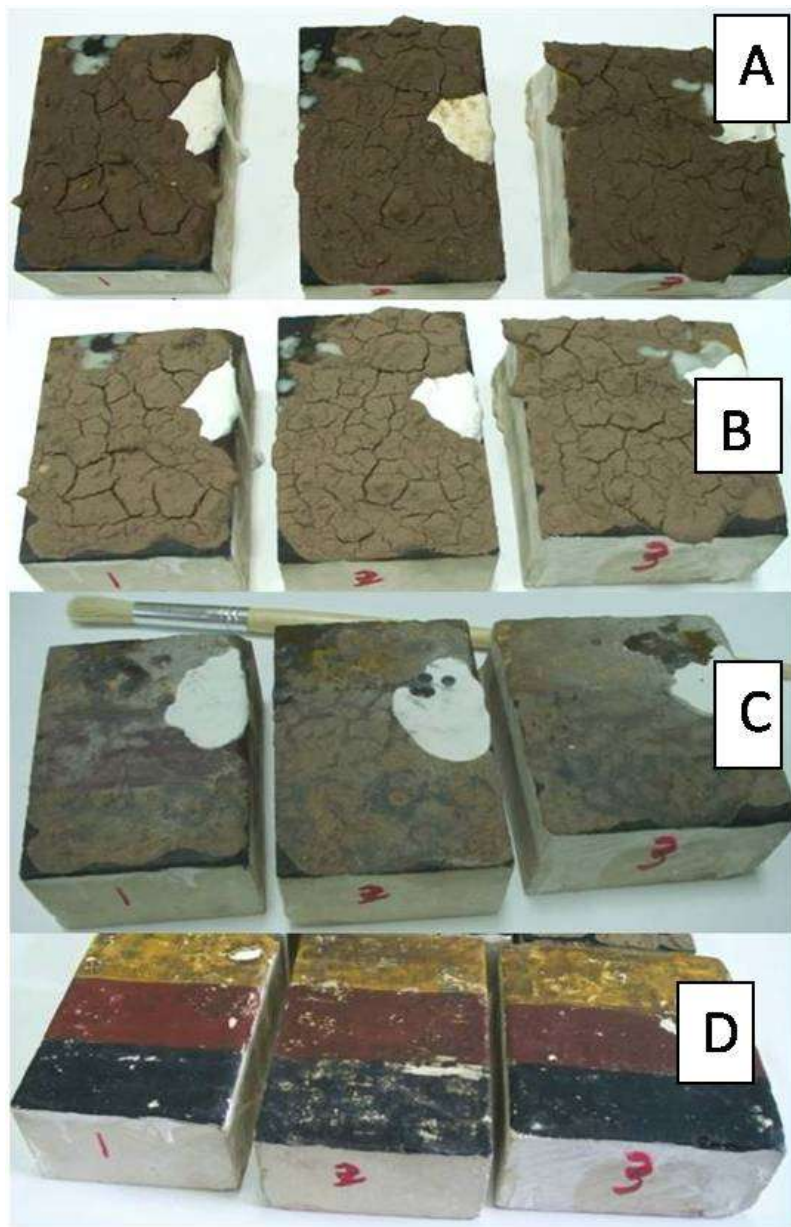


Fig. (7): General photo show the wall painting models after adding the deterioration aspects (a) compared with the artificially ageing cycles (b), the mechanical cleaning (c), and Nd:YAG laser cleaning (d).

3. Results of LIBS and discussion :

In order to assess the laser cleaning process, the LIBS has been used to monitor the emission spectra line of laser induced plasma during cleaning:

Figure (8), shows cumulative LIBS spectra for the black pigment section of the wall painting before cleaning, during the removal of the dirt obtained for consecutive pulses and therefore provide an in depth profile for existing elements in the encrustation till it reached the original surface of the wall painting of the models.

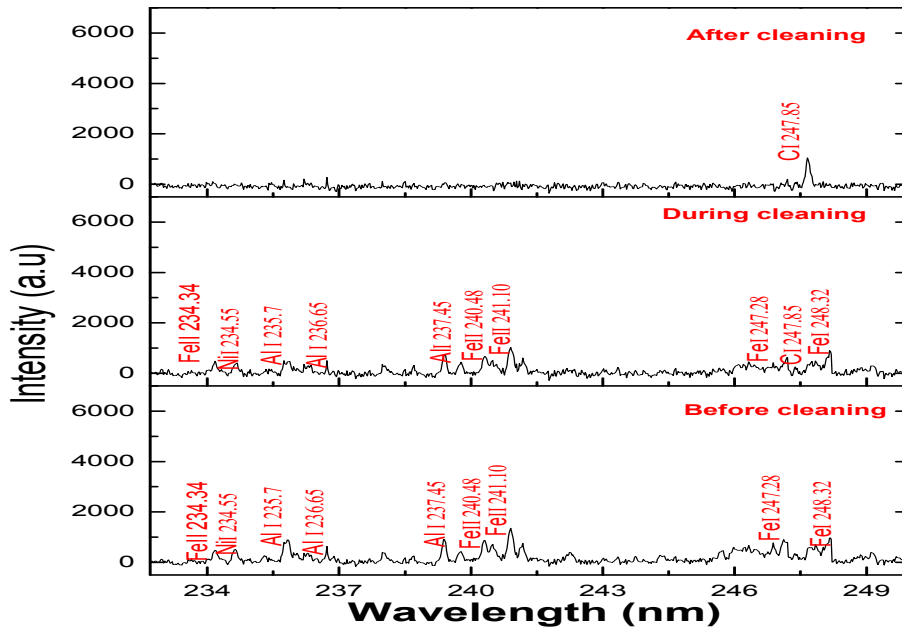


Fig. (8): LIBS spectra of black pigment of the wall painting before, during and after laser cleaning.

On one hand we noticed Al, Fe, elements are the main components before laser cleaning, which are very rich in the deterioration aspects of the wall painting. While getting closer to the original surface the previous elements decreased during laser cleaning. On the other hand it completely disappeared after cleaning and C

element was noticed as the only components, which representing the carbon black pigment. Those mean that we are on the original surfaces of the colored wall painting. According to the above data the successful removal of the layer of encrustations was achieved by monitoring the emission of Al,Fe, lines. When the emission of Al,Fe, disappeared and C emission exist , so we must stop the laser cleaning in this position and the x-y-z stage moved to another one.

Figure (9), shows cumulative LIBS spectra for red pigment section of the wall painting before cleaning, during the removal of the dirt obtained for consecutive pulses and therefore provide an in depth profile for existing elements in the encrustation till it reached the original surface of the wall painting of the models.

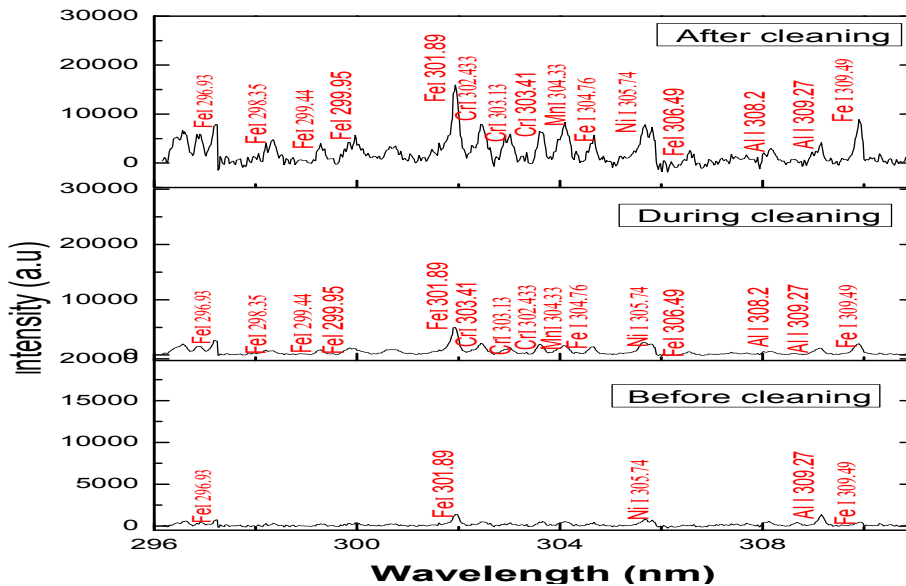


Fig. (9): LIBS spectra of red pigment of the wall painting before, during and after laser cleaning.

From the previous data Al, and Ni elements are the main components before laser cleaning, which are very rich in the deterioration aspects of the wall painting. While Fe presence,

representing the red pigment in the model. By getting closer to the original surface Al element decreased during laser cleaning. On the other hand Al element decreased after cleaning and Fe and Cr elements were noticed as the components, which representing the red pigment. Those mean that we are on the original surfaces of the colored wall painting. According to the above data the successful removal of the layer of encrustations was achieved by monitoring the emission of Al, line. When the emission of Al, decreased and Fe emission exist in a high intensity, so we must stop the laser cleaning in this position and the x-y-z stage moved to another one.

Figure (10), shows on one hand cumulative LIBS spectra for yellow pigment section of the wall painting before cleaning, during the removal of the dirt obtained for consecutive pulses and therefore provide an in depth profile for existing elements in the encrustation till it reached the original surface of the wall painting of the models.

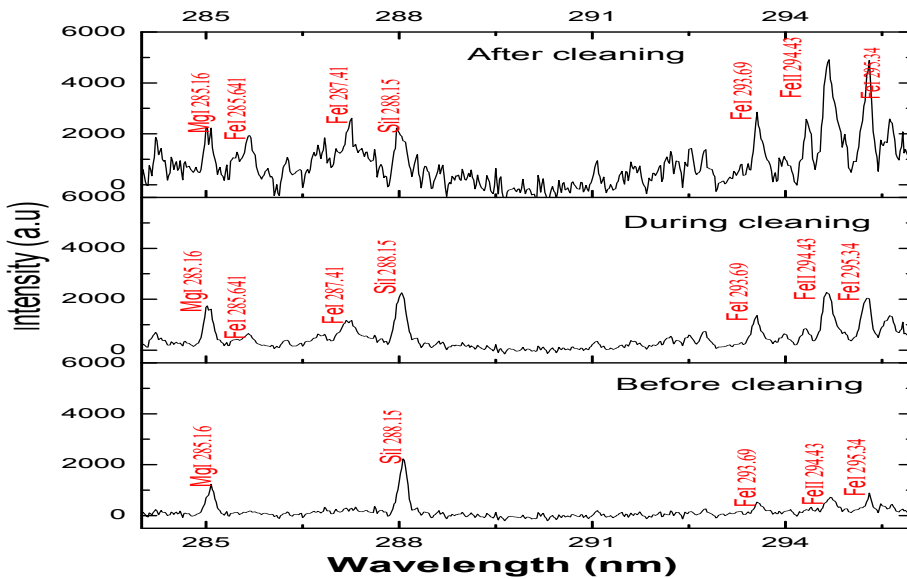
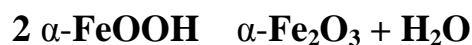


Fig.(10) : LIBS spectra of yellow pigment of the wall painting before, during and after laser cleaning.

From the previous data Si, and Mg elements are the main components before laser cleaning, which are very rich in the deterioration aspects of the wall painting. While, Fe presence, representing the yellow pigment in the model. By getting closer to the original surface, Fe element increased during laser cleaning. On the other hand Si, and Mg elements still there after cleaning which are consider as a contamination of the raw pigment. Those mean that we are on the original surfaces of the colored wall painting.

According to the above data the successful removal of the layer of encrustations was achieved by monitoring the emission of Fe, line. When the emission of Fe exist in a high intensity, so we must stop the laser cleaning in this position and the x-y-z stage moved to another one. On the other hand discoloration was noticed during the laser cleaning because of thermal effect of the 1064nm laser beam, Though different laser wavelength of 532 nm was examined to avoid this discoloration but unfortunately the same results were obtained. The discoloration coming as a result of goethite (α -FeOOH) transformation into hematite(α -Fe₂O₃),”dehydration or thermal dehydroxylation,^{49, 50}”occurring at about 300 °C.,^{51, 52}.The thermal transformation from goethite to hematite can be described by the simple equation:



⁴⁹ - Walter D., Buxbaum G. and Laqua W.: The Mechanism of the Thermal Transformation From Goethite to Hematite, Journal of Thermal Analysis and Calorimetry Volume 63, Number 3, (2001), 733-748.

⁵⁰ - Ruan H. D., Frost R. L., Klopogge J. T. and Duong L.,; Infrared spectroscopy of goethite dehydroxylation: III. FT-IR microscopy of in situ study of the thermal transformation of goethite to hematite, Spectrochimica Acta Part A: Molecular and Biomolecular Spectroscopy Volume 58, Issue 5, (2002), 967-981.

⁵¹ - Fan H., Song B. and Li Q.,: Thermal behavior of goethite during transformation to hematite, Materials Chemistry and Physics Volume 98, Issue 1, 1, (2006), 148-153.

⁵² - Diamandescu, , L Mihàila-Tàràbașanu D. and Feder M.,: On the solid phase transformation goethite → hematite, Materials Letters Volume 17, Issue 5, (1993), 309-311.

On the other hand, the dehydration mechanism is much more complex and depends on the particle size of the goethite needles. Thermal behavior of this transformation was described as followed. In the beginning, surface auto diffusion played a dominant role. With increasing temperatures, micropores were produced due to three-dimensional diffusion of hydrogen or hydroxyl groups in bulk goethite crystals and then merged into the slits because of the high water pressure inside. The morphology of hematite particles with regular texture was changed due to the recrystallization role, and finally spherical particles were formed,⁵³, Fig. (11).

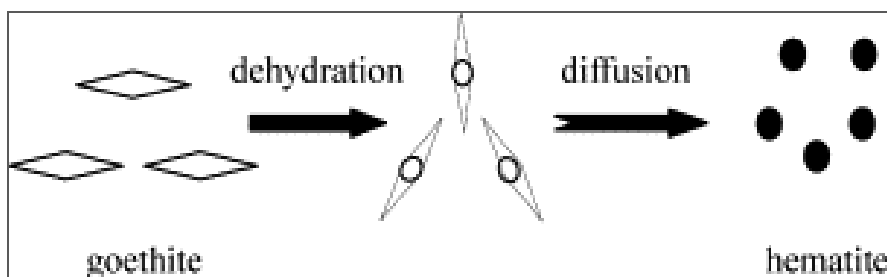


Fig. (11): Thermal behavior of goethite through three-dimensional diffusion (After, Fan H. et al., *Thermal behavior of goethite...Materials Chemistry and Physics* Volume 98, Issue 1 2006.).

Figure (12), shows cumulative LIBS spectra for red pigment section of the wall painting before cleaning, during the removal of gypsum encrustation, obtained for consecutive pulses and therefore provide an in depth profile for existing elements in the encrustation till it reached the original surface of the wall painting of the models.

From the data shown in the figure, Ca, element is the main components before laser cleaning, which are very rich in gypsum encrustation. While, getting closer to the original surface Fe element increased during laser cleaning, which represents the red pigment. On one hand Ca, decreased during and after cleaning On the other hand Fe element increased during and after laser cleaning

⁵³ - González G., Amaya Sagarzazu A. and Villalba R.,: Study of the mechano-chemical transformation of goethite to hematite by TEM and XRD, *Materials Research Bulletin* Volume 35, Issues 14-15, (2000), 2295-2308 .

with a high intensity. Those mean that we are on the original surfaces of the colored wall painting. According to the above data the successful removal of the layer of encrustations was achieved by monitoring the emission of Ca, Fe, lines. When the emission of Ca element decreased and Fe emission exist in a high intensity, so we must stop the laser cleaning in this position and the x-y-z stage moved to another one.

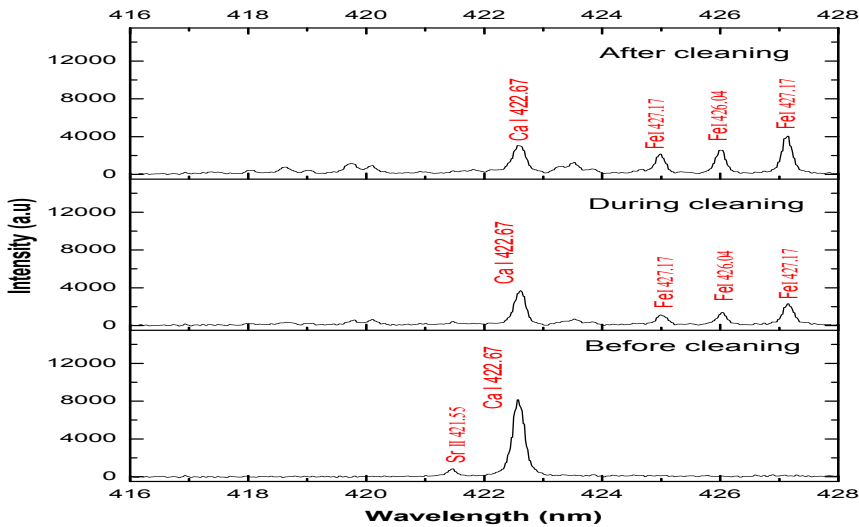


Fig. (12): LIBS spectra of red pigment of the wall painting before , during and after gypsum removal by laser cleaning.

Conclusion:

Laser cleaning assessment of artificially prepared wall painting models was studied in this paper. Laser cleaning was performed with different irradiances according to the kind of encrustation layer of the model. Various conditions of energy per pulse, no of shots and the distance between the lens and model were chosen to irradiate rectangle zone with different irradiance according to the encrustation layer. The high numbers of pulses were used to remove thick crust layer while low number of pulses were used to remove the thin layer (2 Hz). High irradiance of 1.2 J.cm^{-2} was needed to

remove layers of Gypsum (10 Hz). The laser cleaning was very effective in cleaning the models but discoloration of the yellow pigment was noticed during the laser cleaning because of thermal effect of the 1064nm laser beam. Though different laser wavelength of 532nm was examined to avoid this discoloration but the same results were obtained. The discoloration, coming as a result of goethite (α -FeOOH) transformation into hematite (α -Fe₂O₃),” dehydration or thermal dehydroxylation. On the other hand no big difference was noticed for the three media used during laser cleaning.

A good compromise between fluence and the number of pulses always needs to be determined, and the use of laser for cleaning of wall paintings may be well complimented by other traditional methods for cleaning, as it is not always possible to completely remove surface dirt using laser ablation alone. Locally mechanical cleaning was applied before applying laser cleaning.

Laser cleaning, with the aid of on-line LIBS monitoring, has been employed to remove extraneous encrustations of the wall painting models before and during cleaning. The removal, obtained for consecutive pulses and therefore provide an in depth profile for existing elements in the encrustation till it reached the original surface of the wall painting of the models. On the other hand, it is impossible to specify optimal conditions for laser cleaning of the entire sections. In fact, tests illustrate the necessity to optimize laser cleaning for each type of area and the requirement to assess the cleaning results by using LIBS diagnosis.

Acknowledgement:

The authors would like to thank Abdlaa Mahmoud ,the assistant lecturer, faculty of archaeology, conservation dept., Cairo university for his help in the model preparation.

References:

- [1] **Georgiou S., Fotakis C., Anglos D., Zafirooulos V., and Tornari V.,:** Lasers in the Preservation of Cultural Heritage: Principles and Applications Inst. of Physics Pub. Inc., Williston, Vermont, (2006).
- [2] **Calcagno G., Pummer E., and Koller M.,:** “St. Stephen’s Church in Vienna:criteria for Nd:YAG laser cleaning on an architectural scale,” J. Cultural Heritage 1, Supp. 1, (2000) , S111-117.
- [3] **Weeks C.,:**The Portail de la Mère Dieu of Amiens Cathedral: its polychromyand conservation,” Studies in Conservation. 43, (1998) ,101-108.
- [4] **Pini R. Siano S., Salimbeni R., Piazza V.,: Giamello M., G. Sabatini G., and Bevilacqua F.,:** “Application of a new laser cleaning procedure to the mausoleum of Theodoric,” J. Cultural Heritage 1, (2000) , S93-97.
- [5] **Bromblet P., Labouri M., and Oriol G., :**“Diversity of the cleaning procedures including laser for the restoration of carved portals in France over the last 10 years,” J. Cultural Heritage 4, (2003) ,17- 26.
- [6] **Siano S., Casciani A, Giusti A., M. Matteini M., Pini R., Porcinai S., and Salimbeni R., :**“The Santi Quattro Coronati by Nanni di Banco: cleaning ofthe gilded decorations,” J. Cultural Heritage 4, Supp. 1, (2003) ,123 –128.
- [7] **Siano S. and Salimbeni R., :**“The Gate of Paradise: physical optimization of the laser cleaning approach,” Studies in Conservation,(2001), 46, 269.
- [8] **Lee J. M.’ and Watkins K. G.,:** In process and intelligent mointering systems for laser cleaning process. Optics and Lasers in Engineering Volume 34, Issues 4-6, October 2000, Pages 429-442 Ph.D. Thesis, University of Liverpool, UK., (1999).
- [9] **Klein, S.; Hildenhagen, J.; Dickmann, K.; Stratoudaki, T.; Zafirooulos, V.,;** LIBS-Spectroscopy for Monitoring and Control of the Laser Cleaning Process of Stone and Medieval Glass. J. Cult. Herit., 1, (2000), 287-292.
- [10] **Oujja, M.; Rebollar, E.; Castillejo, M.; Domingo, C.; Cirujano, C.; Guerra Librero, F.,:** Laser Cleaning of Terracotta Decorations of the Portal of Palos of the Cathedral of Seville. J. Cult. Herit., 6, n 4, (2005), 321-327.
- [11] **Lazic, V.; Fantoni, R.; Colao, F.; Santagata, A.; Morone, A.; Spizzichino, V.,:** Quantitative Laser Induced Breakdown Spectroscopy Analysis of Ancient Marbles and Corrections for the Variability of Plasma Parameters and of Ablation Rate. J. Anal. At. Spectrom., 19, (2004), 429-436.
- [12] **Scholten, J.H.; Teule, J.M.; Zafirooulos, V.; Heeren, R.M.A.,:** Controlled Laser Cleaning of Painted Artworks using Accurate Beam Manipulation and On-line LIBS-Detection. J. Cult. Herit. 1, (2000), 215-220.
- [13] **Bracco, P.; Lanterna, G.; Matteini, M.; Nakahara, K.; Sartiani, O.; de Cruz, A.; Wolbarsht, M.L.; Adamkiewicz, E.; Colombini, M.P.,:** Er:YAG

Llaser: An Innovative Tool for Controlled Cleaning of Old Paintings: Testing and Evaluation. *J. Cult. Herit.*, 4, (2003), 202-208.

[14] **Batishche, S.; Englezis, A.; Gorovets, T.; Kouzmouk, A.; Pilipenka, U.; Pouli, P.; Tatur, H.; Totou, G.; Ukhau, V.;** Nd:YAG Laser Double Wavelength Ablation of Pollution Encrustation on Marble and Bonding Glues on Duplicated Painting Canvas. *Appl. Surf. Sci.*, 248, (2005), 264-269.

[15] **Pouli, P.; Nevin, A.; Andreotti, A.; Colombini, P.; Georgiou, S.; Fotakis, C.;** Laser Assisted Removal of Synthetic Painting-Conservation Materials using UV Radiation of ns and fs Pulse Duration: Morphological Studies on Model Samples. *Appl. Surf. Sci.*, 255, (2009), 4955-4960.

[16] **Teule, R.; Scholten, H.; van den Brink, O.F.; Heeren, R.M.A.; Zafiropulos, V.; Hesterman, R.; Castillejo, M.; Martin, M.; Ullenius, U.; Larsson, I.; Guerra-Librero, F.; Silva, A.; Gouveia, H.; Albuquerque, M.-B.;** Controlled UV Laser Cleaning of Painted Artworks: A Systematic Effect Study on Egg Tempera Paint Samples. *J. Cult. Herit.*, 4, (2003), 209-215.

[17] **Lopez, A.J.; Nicolas, G.; Mateo, M.P.; Pinon, V.; Tobar, M.J.; Ramil, A.;** Compositional Analysis of Hispanic Terra Sigillata by Laser-induced Breakdown Spectroscopy. *Spectrochim. Acta B*, 60, (2005), 1149-1154.

[18] **Lopez, A.J.; Nicolas, G.; Mateo, M.P.; Ramil, A.; Pinon, V.; Yanez, A.;** LIPS and Linear Correlation Analysis Applied to the Classification of Roman Pottery Terra Sigillata. *Appl. Phys. A*, 83, (2006), 695-698.

[19] **Colao, F.; Fantoni, R.; Lazic, V.; Spizzichino, V.;** Laser-induced Breakdown Spectroscopy for semi-Quantitative and Quantitative Analyses of Artworks—Application on multi-Layered Ceramics and Copper based Alloys. *Spectrochim. Acta B*, 57, (2002), 1219-1234.

[20] **Fortes, F.J.; Cabalín, L.M.; Laserna, J.J.;** The Potential of Laser-induced Breakdown Spectrometry for Real Time Monitoring the Laser Cleaning of Archaeometallurgical Objects. *Spectrochim. Acta B*, 63, (2008), 1191-1197.

[21] **Ochocińska, K.; Kamińska, A.; Sliwinski, G.;** Experimental Investigations of Stained Paper Documents Cleaned by the Nd:YAG Laser Pulses. *J. Cult. Herit.* (2003), 4, 188-193.

[22] **Kaminska, A.; Sawczak, M.; Komar, K.; Sliwinski, G.;** Application of the Laser Ablation for Conservation of Historical Paper Documents. *Appl. Surf. Sci.* (2007), 253, 7860-7864.

[23] **Gronlund, R.; Lunqvist, M.; Svanberg, S.;** Remote Imaging Laser-induced Breakdown Spectroscopy and Remote Cultural Heritage Ablative Cleaning. *Opt. Lett.*, 30, (2005), 2882-2884.

- [24] **Vazquez-Calvo, C.; Giakoumaki, A.; Anglos, D.; Alvarez de Buergo, M.; Fort, R.:** Classification of Patinas Found on Surfaces of Historical Buildings by Means of Laser-induced Breakdown Spectroscopy. In *Lasers in the Conservation of Artworks*; Springer: Berlin, Germany; Volume 116, (2007) , 415-420.
- [25] **Osticioli, I.; Mendes, N.F.C.; Porcinai, S.; Cagnini, A.; Castellucci, E.:** Spectroscopic Analysis of Works of Art using A Single LIBS and Pulsed Raman Setup. *Anal. Bioanal. Chem.*, 394, (2009) , 1033-1041.
- [26] **Burgio, L.; Melessanaki, K.; Doulgeridis, M.; Clark, R.J.H.; Anglos, D.** (2010) Pigment Identification in Paintings Employing Laser Induced Breakdown Spectroscopy and Raman Microscopy. *Spectrochim. Acta B* (2010), 56, 905-913.
- [27] **Clark, R.J.H.:** Pigment Identification by Spectroscopic Means: An Arts/Science Interface. *C. R. Chim.*2002, 5, 7-20.
- [28] **Brysbaert, A.; Melessanaki, K.; Anglos, D.:** Pigment Analysis in Bronze Age Aegean and Eastern Mediterranean Painted Plaster by Laser-induced Breakdown Spectroscopy (LIBS). *J. Archaeol. Sci.* 2006, 33, (2006), 1095-1104.
- [29] **Castillejo, M.; Martin, M.; Silva, D.; Stratoudaki, T.; Anglos, D.; Burgio, L.; Clark, R.J.H.:**Analysis of Pigments in Polychromes by Use of Laser Induced Breakdown Spectroscopy and Raman Microscopy. *J. Mol. Struct.*, 550, (2000) , 191-198.
- [30] **Oujja, M.; Vila, A.; Rebollar, E.; Garcia, J.F.; Castillejo, M.:** Identification of Inks and Structural Characterization of Contemporary Artistic Prints by Laser-induced Breakdown Spectroscopy, *Spectrochim. Acta B*, 60, (2005), 1140-1148.
- [31] **Bruder, R.; L'Hermite, D.; Semerok, A.; Salmon, L.; Detalle, V.:** Near-Crater Discoloration of White Lead in Wall Paintings During Laser Induced Breakdown Spectroscopy Analysis, *Spectrochim. Acta B*, 62, (2007), 1590-1596.
- [32] **Dolgin, B.; Chen, Y.; Bulatov, V.; Schechter, I.:** Use of LIBS for Rapid Characterization of Parchment. *Anal. Bioanal. Chem.*, 386, (2006), 1535-1541.
- [33] **Uda M., Sassa S., Yoshimura S., Kondo J., Nakamura M., Ban Y., Adachi H.:** Yellow, red and blue pigments from ancient Egyptian palace painted walls, *Nuclear Instruments and Methods in Physics Research B* 161-163, (2000) , 758 -761.
- [34] **Alessandra P., Lorenzo A. and Piero M.:** Non-destructive in situ determination of pigments in 15th century wall paintings by Raman

microscopy ,Analytica Chimica Acta Volume 480, Issue 2, 24 March, (2003), 317-325 .

[35] **Norvaisiene R. , Burlingis A. and Stankevicius V.,** : Durability tests on painted facade rendering by accelerated ageing , materials science (Medziagotyra). Vol. 16, No. 1. (2010), 80-85.

[36] **Danilo B., Gianni A., Pier P. L. and Antonella C.,**: Raman microspectrometric investigation of wall paintings in: a comparison between two artists of the 16th century , Spectrochimica Acta Part A: Molecular and Biomolecular Spectroscopy Volume 59, Issue 10, (2003) , 2409-2417.

[37] **Uda M.,**: In situ characterization of ancient plaster and pigments on tomb walls in Egypt using energy dispersive X-ray diffraction and fluorescence ,Nuclear Instruments and Methods in Physics Research Section B: Beam Interactions with Materials and Atoms, Volume 226, Issues 1-2, (2004), 75-82.

[38] **Walter D., Buxbaum G. and Laqua W.,**: The Mechanism of the Thermal Transformation From Goethite to Hematite, Journal of Thermal Analysis and Calorimetry Volume 63, Number 3, (2001), 733-748.

[39] **Ruan H. D., Frost R. L., Klopogge J. T. and Duong L.,**: Infrared spectroscopy of goethite dehydroxylation: III. FT-IR microscopy of in situ study of the thermal transformation of goethite to hematite, Spectrochimica Acta Part A: Molecular and Biomolecular Spectroscopy Volume 58, Issue 5, (2002), 967-981.

[40] **Fan H., Song B. and Li Q.,**: Thermal behavior of goethite during transformation to hematite, Materials Chemistry and Physics Volume 98, Issue 1, 1, (2006), 148-153.

[41] **Diamandescu , L Mihăilă-Tărâbășanu D. and Feder M.,**: On the solid phase transformation goethite → hematite, Materials Letters Volume 17, Issue 5, (1993), 309-311.

[42] **González G. , Amaya Sagarzazu A. and Villalba R.,**: Study of the mechano-chemical transformation of goethite to hematite by TEM and XRD, Materials Research Bulletin Volume 35, Issues 14-15, (2000), 2295-2308 .